

G73JW Repair Guide

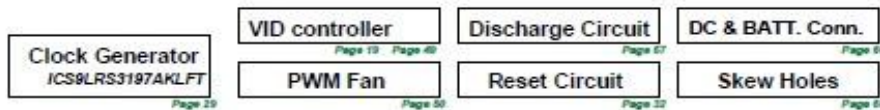
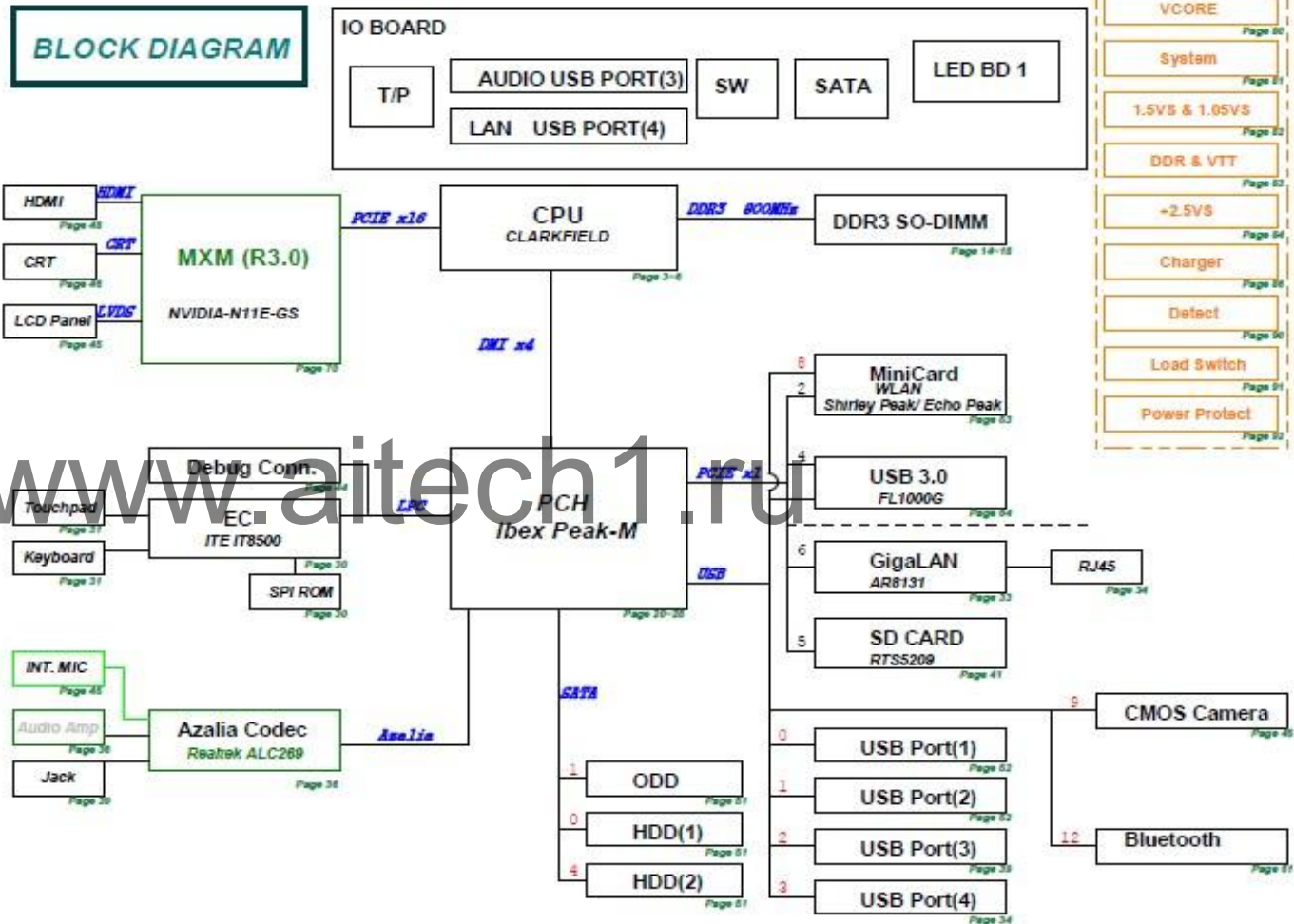
2010/08/20
Eric_zhuang
CSC-GRMA

SYSTEM PAGE REF.

G73Jw SCHEMATIC Revision 2.0

| PAGE | Content |
|------|-----------------------------------|
| 1 | Block Diagram |
| 2 | System Setting |
| 3 | CPU(1) DMI, PEG, FDI, CLK, MISC |
| 4 | CPU(2) DDR3 |
| 5 | CPU(3) CFG, RSVD, GND |
| 6 | CPU(4) PWR |
| 7 | CPU(5) XDP |
| 14 | DDR3 SO-DIMM 0 -A(1) |
| 15 | DDR3 SO-DIMM 0 -B(1) |
| 16 | DDR3 SO-DIMM 0 -A(0) |
| 17 | DDR3 SO-DIMM 1 -B(0) |
| 18 | DDR3 CA DQ VOLTAGE |
| 19 | VID controller |
| 20 | PCH IBEX (1) SATA, IHDA, RTC, LPC |
| 21 | PCH IBEX (2) PCIE, CLK, SMB, PEG |
| 22 | PCH IBEX (3) FDI, DMI, SYS PWR |
| 23 | PCH IBEX (4) DP, LVDS, CRT |
| 24 | PCH IBEX (5) PCI, NVRAM, USB |
| 25 | PCH IBEX (6) CPU, GPIO, MISC |
| 26 | PCH IBEX (7) POWER, GND |
| 27 | PCH IBEX (8) POWER, GND |
| 28 | PCH SPI ROM, OTH |
| 29 | CLK ICS9LRS3197 |
| 30 | EC IT8541 (1/2) |
| 31 | EC IT8541 (2/2) KB, TP |
| 32 | RST Reset Circuit |
| 33 | LAN AR8131 |
| 34 | LAN IO BOARD |
| 36 | CODEC-ALC269 |
| 37 | AUD Amp & Jack |
| 38 | AUD MIC-IN |
| 40 | CB AU6433 |
| 44 | BUG Debug |
| 45 | CRT LCD Panel |
| 46 | CRT D-Sub |
| 48 | TV HDMI |
| 49 | VID CONTROLLER |
| 50 | FAN Fan & Sensor |
| 51 | XDD HDD & ODD |
| 52 | USB USB Port *2 |
| 53 | MINICARD (WLAN) |
| 56 | LED Indicator |
| 57 | DSG Discharge |
| 58 | PW PROTECT |
| 60 | DC DC & BAT Conn. |
| 61 | BT Bluetooth |
| 64 | TUN TV Tuner |
| 65 | ME Conn & Skew Hole |
| 66 | WHD1 |
| 67 | PCH XDP |
| 70 | VGA_MXM 30 |

| | |
|----|---------------------------|
| 80 | PW_VCORE (NCP321) |
| 81 | PW_SYSTEM (RT8206A) |
| 82 | PW_I/O VTT CPU6+1.1VM |
| 83 | PW_I/O DDR+ VTT+ +1.8VS |
| 84 | PW_I/O 3VM & ME +VM PWEGD |
| 86 | PW +VGFY CORE (MAX17028) |
| 88 | PW_CHARGER (MAX17015) |
| 90 | PW_DETECT |
| 91 | PW_LOAD SWITCH |
| 92 | PW_PROTECT |
| 93 | PW_SIGNAL |
| 94 | PW_FLOWCHART |

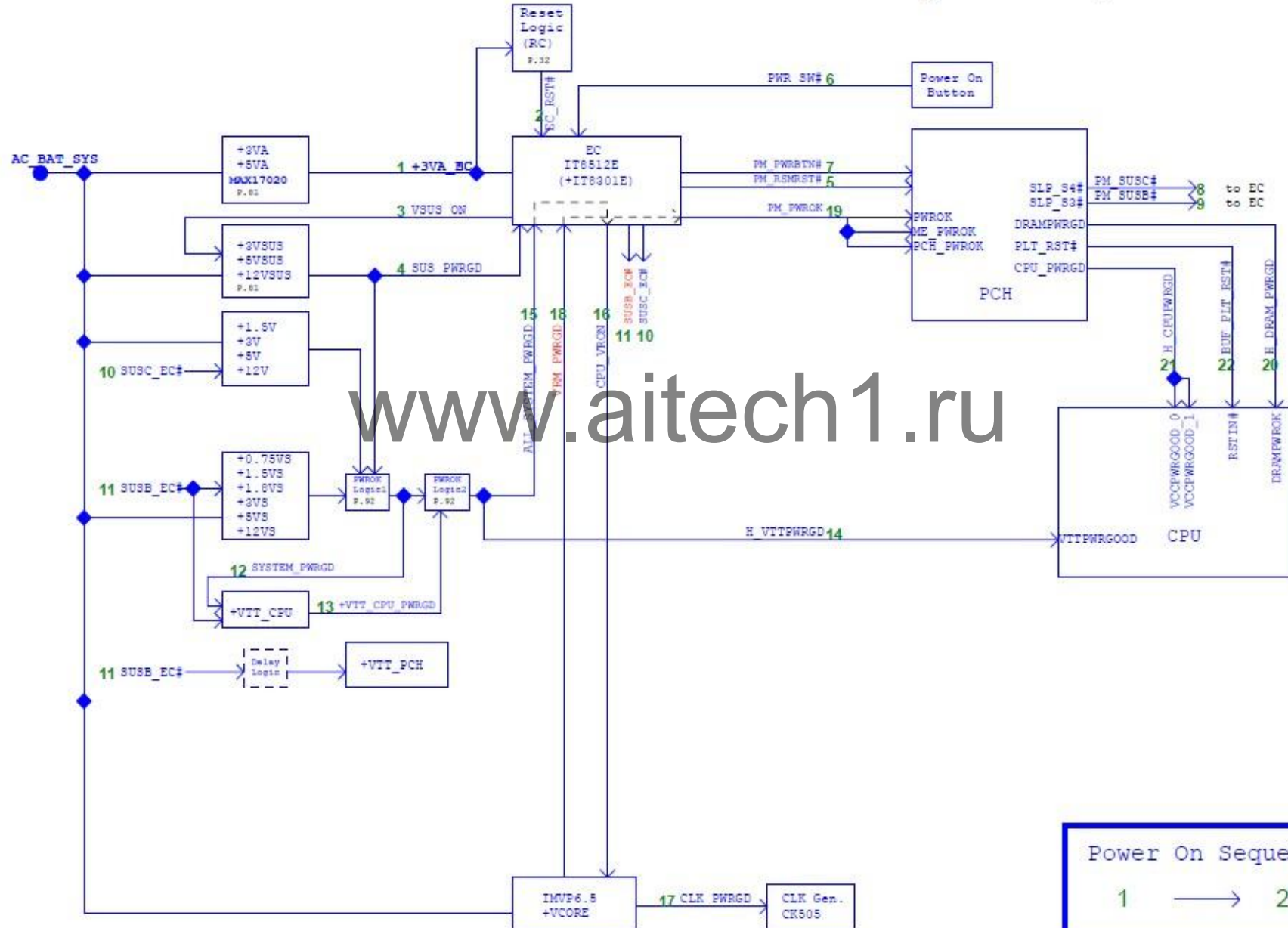


G73JW Repair Guide

2010/08/20
Eric_zhuang
CSC-GRMA

AC-IN Mode

G73 Power On Sequence Diagram

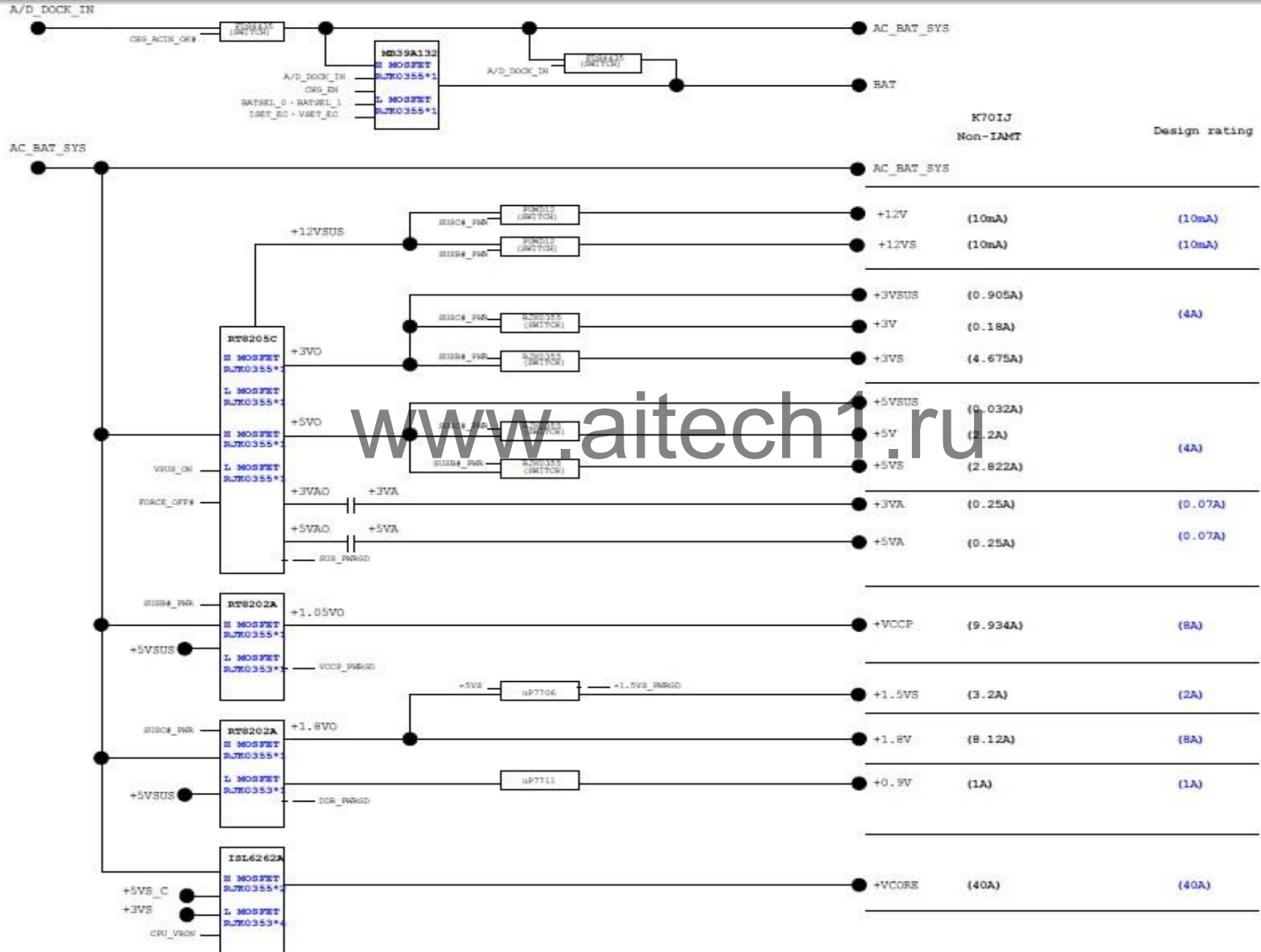


Power On Sequence

1 → 22

G73JW Repair Guide

2010/08/20
Eric_zhuang
CSC-GRMA



G73JW Repair Guide

2010/08/20
Eric_zhuang
CSC-GRMA



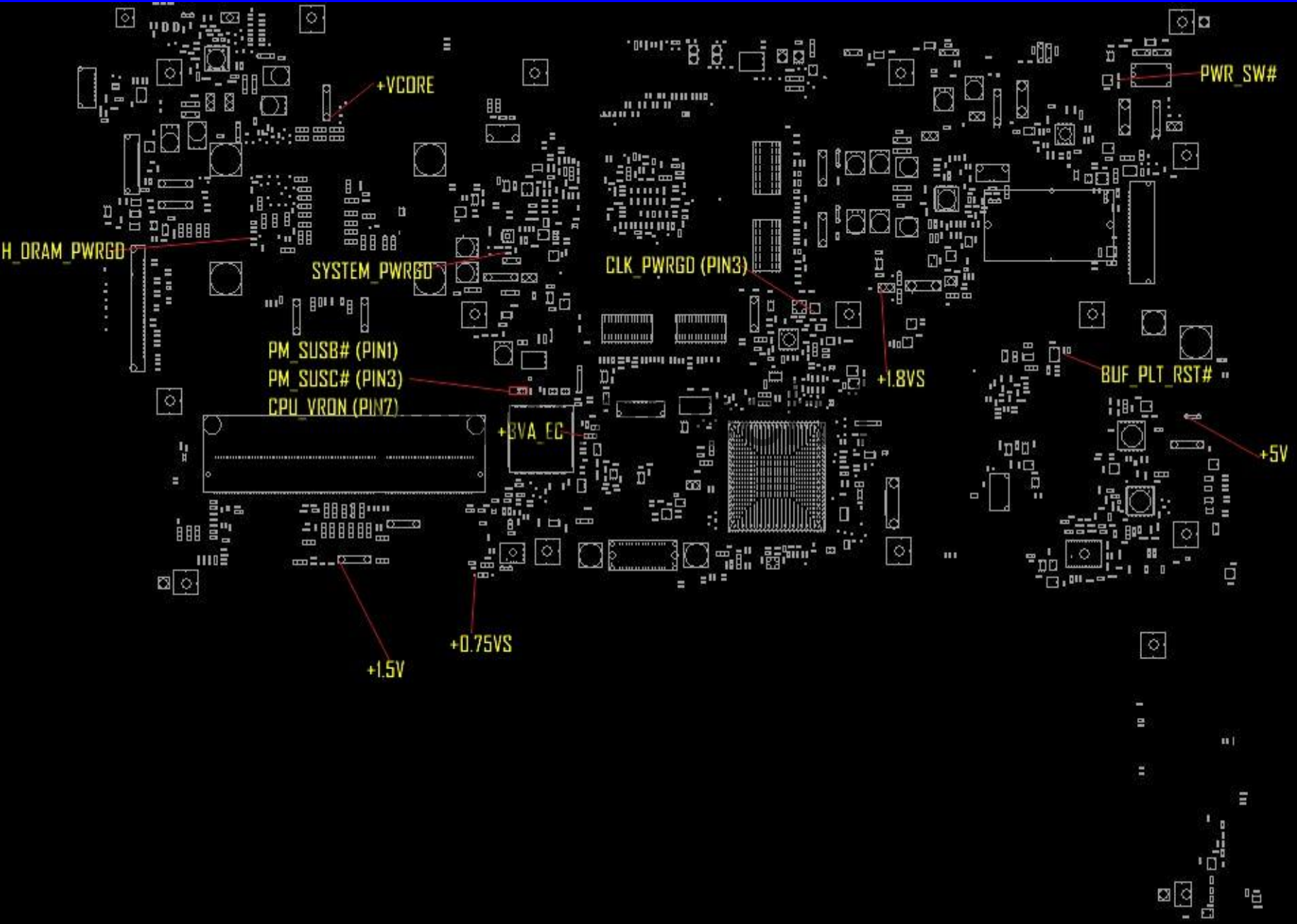
G73JW Repair Guide

2010/08/20
Eric_zhuang
CSC-GRMA



G73JW Repair Guide(Top)

2010/08/20
Eric_zhuang
CSC-GRMA



G73JW Repair Guide(Bottom)

2010/08/20
Eric_zhuang
CSC-GRMA

